



Container Sizes

Container Size	Maximum Capacity	Dimensions (feet meters)	Door Height
20' container	28 cbm (stretch to 29)	Length: 19' 5" 5.919 m Width: 7' 8" 2.340 m Height: 7' 9 1/2" 2.380 m	7' 5 1/2" 2.278 m
40' container	58 cbm (stretch to 59)	Length: 39' 6 1/2" 12.051 m Width: 7' 8" 2.340 m Height: 7' 9 1/2" 2.380 m	7' 5 1/2" 2.278 m
40' HC container (High Cube)	65 cbm (stretch to 68)	Length: 39' 6 1/2" 12.056 m Width: 7' 8 1/4" 2.347 m Height: 8' 5 1/2" 2.684 m	8' 5 3/4" 2.585 m
45' HC container (High Cube)	75 cbm (stretch to 80)	Length: 45' 13.716 m Width: 8' 2.438 m Height: 9' 6" 2.896 m	8' 5 3/4" 2.585 m

Manufacturers of High
Quality Container Homes

deon@containerhome.co.za

Head Office
(021) 201 1236
Deon 065 127 5026



Our Mission

Container Home South Africa has, as our mission, to provide affordable alternative housing solutions that is both affordable and luxury. We pride ourselves on building homes you can be proud of.

As shipping containers are standard sizes, your building project can be totally expandable with the correct planning in place. Start off with a single unit, and extend when necessary. Just remember to plan in advance.

A typical ISO shipping container is made from a 'weathering steel' as specified within BS EN 10025-5:2004. This is commonly known as 'Cor-ten' steel which is rust resistant when treated properly.

Our standard designs can be manufactured and delivered within 30- 45 days from order. We deliver and install Nation Wide. We also export to Southern Africa. (Option 1 and 2 only)

Please visit our website for FAQ's. www.containerhome.co.za

Like us on Facebook: www.facebook.com/containerhomesA

Let us help with any of the following:

1. Is a Container Home allowed on your plot? We will find out for free! Just send us your address and a copy of your Title Deed
2. Municipal Approvals. We can take care of that for you.
3. Septic Tank Installation
4. Solar Power
5. Eskom Connection
6. Water Connection
7. Site Clearing

We have an EXTENSIVE Network of Service Providers that can help with anything from Plumbing to Blinds to Pest Control. Please do not hesitate to ask.

WE ALSO DO CUSTOM DESIGN HOMES.

**Manufacturers of High
Quality Container Homes**

deon@containerhome.co.za

Head Office
(021) 201 1236
Deon 065 127 5026

2020 Option 1: Luxury One Bedroom 12m Shipping Container Home



1. 1 Bedroom with built in wardrobe
2. 2 Different design layouts available
3. 1 Bathroom which includes Shower, Basin, Toilet, Tiled shower wall, Waterproofed floor and connecting wall, Towel rack and mirror, toilet roll holder
4. Built in Kitchen which includes Floor standing Kitchen cupboards, 2 plate gas stove, Countertop.
5. 16l Constant Temp Gas Geyser
6. Living area
7. Full Insulation
8. Drywall finishes and partitions
9. Hollow core doors
10. LED Lighting Throughout. Includes exterior lights on the deck side.
11. Multiple Power Outlets in all areas
12. Electrical installation including DB Board
13. Plumbing for basing, shower, Toilet and kitchen basin.
14. Insulated Ceilings throughout
15. Laminate flooring throughout
16. Painted interior to your preferred colours.
17. 12m High Cube Shipping Container. Wire brushed and painted.
18. Aluminium Frame doors and Windows (Single pane glass)

Manufacturers of High
Quality Container Homes

deon@containerhome.co.za

Head Office
(021) 201 1236
Deon 065 127 5026

Optional Extras:

- Exterior Shower Area
- Wood Deck areas manufactured from 32mm Pine Wood or Hardwood if required.
- Roof over the entire structure
- Foundations (recommended)
- Exterior Cladding
- Upgraded Vinyl Flooring

Pricing:

Base Model without any extras:	R239 000 Excl VAT
Extras:	Based on client requests
Delivery and installation:	Priced separately depending on installation site
Connection to utilities:	Price based in installation site
Foundations: requirements	Price based on installation site and client

Understand and obey the municipal by-laws!

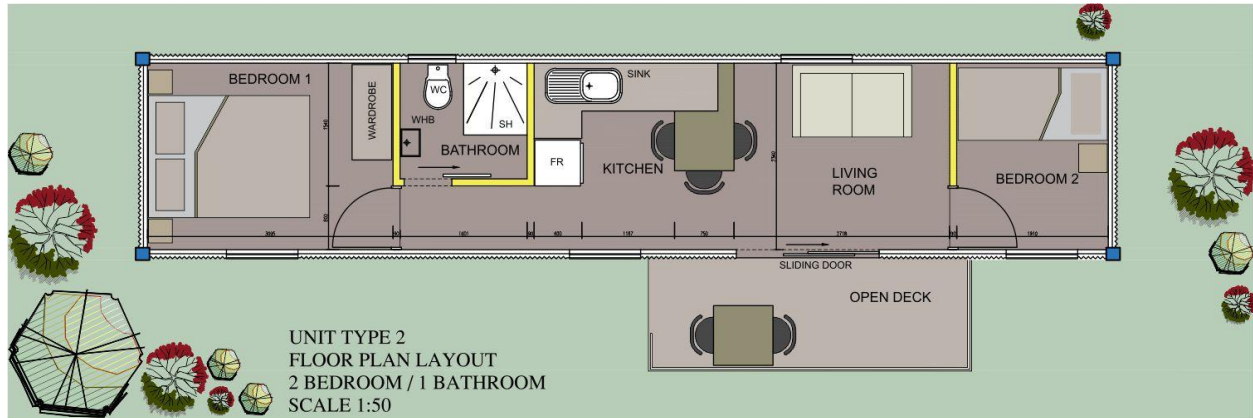
In most instances, a single container will not require municipal planning or approval. However more than one, or more involved conversions will probably require municipal approval of your plans.

Manufacturers of High
Quality Container Homes

deon@containerhome.co.za

Head Office
(021) 201 1236
Deon 065 127 5026

2020 Option 2: Luxury Two Bedroom 12m Shipping Container Home



Features

1. 2 Bedroom with built in wardrobe
2. 1 Bathroom which includes Shower, Basin, Toilet, Tiled shower wall, Waterproofed floor and connecting wall, Towel rack and mirror, toilet roll holder
3. Built in Kitchen which includes Floor standing Kitchen cupboards, 2 plate gas stove, Countertop.
4. 16l Constant Temp Gas Geyser
5. Living area
6. Full Insulation
7. Drywall finishes and partitions
8. Hollow core doors
9. LED Lighting Throughout. Includes exterior lights on the deck side.
10. Multiple Power Outlets in all areas
11. Electrical installation including DB Board
12. Plumbing for basing, shower, Toilet and kitchen basin.
13. Insulated Ceilings throughout
14. Laminate flooring throughout
15. Painted interior to your preferred colours.
16. 12m High Cube Shipping Container. Wire brush and Painted Exterior
17. Aluminium Frame doors and Windows (Single pane glass)

Manufacturers of High
Quality Container Homes

deon@containerhome.co.za

Head Office
(021) 201 1236
Deon 065 127 5026

Optional Extras:

- Exterior Shower Area
- Wood Deck areas manufactured from 32mm Pine Wood or Hardwood if required.
- Roof over the entire structure
- Foundations (recommended)
- Exterior Cladding
- Upgraded Vinyl Flooring

Pricing:

Base Model without any extras:

R248 000 Excl VAT

Extras:

Based on client requests

Delivery and installation:

Priced separately depending on installation site

Connection to utilities:

Price based in installation site

Foundations:
requirements

Price based on installation site and client

Understand and obey the municipal by-laws!

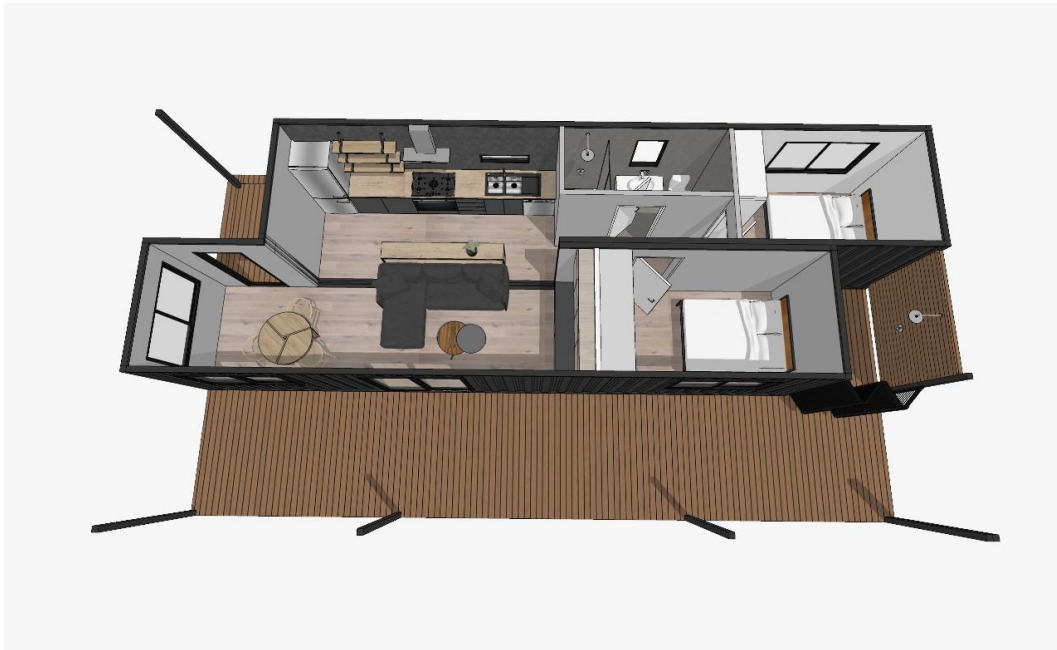
In most instances, a single container will not require municipal planning or approval. However more than one, or more involved conversions will probably require municipal approval of your plans.

Manufacturers of High
Quality Container Homes

deon@containerhome.co.za

Head Office
(021) 201 1236
Deon 065 127 5026

2020 Option 3: Luxury Two Bedroom, Double 12m Shipping Container Home



Features

1. 2 Bedroom with built in wardrobe
2. Kitchen with 4 burner gas stove, wash basin, cupboards and countertop,
3. 1 Bathroom which includes Shower, Basin, Toilet, Tiled shower wall, Waterproofed floor and connecting wall, Towel rack and mirror, toilet roll holder
4. 16l Constant Temp Gas Geyser
5. Extended Living area
6. Full Insulation
7. Drywall finishes and partitions
8. Hollow core doors
9. LED Lighting Throughout. Includes exterior lights on the deck side.
10. Multiple Power Outlets in all areas
11. Electrical installation including DB Board
12. Plumbing for basing, shower, Toilet and kitchen basin.

Manufacturers of High
Quality Container Homes

deon@containerhome.co.za

Head Office
(021) 201 1236
Deon 065 127 5026

13. Insulated Ceilings throughout
14. Laminate Flooring Throughout
15. Painted interior to your preferred colours.
16. 2 x 12m High Cube Shipping Container painted in your preferred colour (Rust Proof paint)
17. Aluminium Frame doors and Windows (Single pane glass)

Optional Extras:

- Exterior Shower Area
- Wood Deck areas manufactured from 32mm Pine Wood or Hardwood if required.
- Roof over the entire structure
- Foundations (recommended)
- Exterior Cladding
- Upgraded Vinyl Flooring
- Fireplace

Pricing:

Base Model without any extras:	R390 000 Excl VAT
Extras:	Based on client requests
Delivery and installation:	Priced separately depending on installation site
Connection to utilities:	Price based in installation site
Foundations:	Price based on installation site and client requirements



deon@containerhome.co.za

Head Office
(021) 201 1236
Deon 065 127 5026

2020 Option 4 : Luxury 1 One Bedroom 6m Shipping Container Studio Apartment



Similar look*

Features

1. 1 Studio Bedroom with built in wardrobe
2. 1 Bathroom which includes Shower, Basin, Toilet, Tiled shower wall, Waterproofed floor and connecting wall, Towel rack and mirror, toilet roll holder
3. Built in Kitchen which includes Floor standing Kitchen cupboards, 4 plate electric stove, Countertop.
4. 50l Electric hot water heater
5. Living area
6. Full Insulation throughout.
7. Drywall finishes and partitions
8. Hollow core sliding and internal internal door
9. LED Lighting Throughout. Includes exterior lights on the deck side.
10. Multiple Power Outlets in all areas
11. Electrical installation including DB Board
12. Plumbing for basing, shower, Toilet and kitchen basin.
13. Insulated Ceilings throughout
14. Flooring throughout (Laminated Flooring)
15. Painted interior to your preferred colours.
16. 6m B Grade High Cube Shipping Container in its original colour (Rust Proof paint)

Manufacturers of High
Quality Container Homes

deon@containerhome.co.za

Head Office
(021) 201 1236
Deon 065 127 5026

17. Aluminium Frame doors and Windows (Single pane glass)

Optional Extras:

- Exterior Shower Area
- Wood Deck areas manufactured from 32mm Pine Wood or Hardwood if required.
- Roof over the entire structure
- Foundations (recommended)
- Exterior Cladding
- Upgraded Vinyl Flooring

Pricing:

Base Model without any extras:	R149 000 excl VAT and delivery
Extras:	Based on client requests
Delivery and installation:	Priced separately depending on installation site
Connection to utilities:	Price based in installation site
Foundations:	Price based on installation site and client requirements

Understand and obey the municipal by-laws!

In most instances, a single container will not require municipal planning or approval. However more than one, or more involved conversions will probably require municipal approval of your plans.



deon@containerhome.co.za

Head Office
(021) 201 1236
Deon 065 127 5026

2020 Option 5 : Luxury 1 One Bedroom Double 6m Shipping Container Studio Home



1. 1 Studio Bedroom with built in wardrobe
2. 1 Bathroom which includes Shower, Basin, Toilet, Tiled shower wall, Waterproofed floor and connecting wall, Towel rack and mirror, toilet roll holder
3. Built in Kitchen which includes Floor standing Kitchen cupboards, 4 plate electric stove, Countertop.
4. 50l Electric hot water heater
5. Living area
6. Full Insulation throughout.
7. Drywall finishes and partitions
8. Hollow core sliding and internal door
9. LED Lighting Throughout. Includes exterior lights on the deck side.
10. Multiple Power Outlets in all areas
11. Electrical installation including DB Board

Manufacturers of High
Quality Container Homes

deon@containerhome.co.za

Head Office
(021) 201 1236
Deon 065 127 5026

12. Plumbing for basing, shower, Toilet and kitchen basin.
13. Insulated Ceilings throughout
14. Flooring throughout (Laminated Flooring)
15. Painted interior to your preferred colours.
16. 2 x 6m B Grade High Cube Shipping Container in its original colour (Rust Proof paint)
17. Aluminium Frame doors and Windows (Single pane glass)

Optional Extras:

- Exterior Shower Area
- Wood Deck areas manufactured from 32mm Pine Wood or Hardwood if required.
- Roof over the entire structure
- Foundations (recommended)
- Exterior Cladding
- Upgraded Vinyl Flooring

Pricing:

Base Model without any extras:	R249 000 excl VAT and delivery
Extras:	Based on client requests
Delivery and installation:	Priced separately depending on installation site
Connection to utilities:	Price based in installation site
Foundations:	Price based on installation site and client requirements

Understand and obey the municipal by-laws!

In most instances, a single container will not require municipal planning or approval. However more than one, or more involved conversions will probably require municipal approval of your plans.



deon@containerhome.co.za

Head Office
(021) 201 1236
Deon 065 127 5026

Optional Extras on all models

- Solar Power Electricity. We install 3KVA and 5KVA systems in our homes. Built in battery cabinets, solar panels, and optional Eskom attachment.
- Gas Stove / Gas Geyser (Now included as Standard)
- Deck Space (please indicate size required)
- Flat roof covering the entire structure (recommended) – This reduces heat in the container home and also protects the roof of the container ensuring a much longer maintenance free home.
- Security features required. Burglar bars, Security Gate, Alarm system, Outdoor lighting.
- Window Treatments (Blinds, Curtain Rails, window tinting and UV treatment)
- Air-conditioning. We can also pre-install all the piping and electrical points if required. This will ensure an easy installation at a later stage if you ever decide to install air-conditioning.
- Rainwater tank. (this is available ONLY if a covering roof is installed)
- Grey water tank.
- Outside Cladding of partial or complete walls

**WE ALSO DO CUSTOM
DESIGNED HOMES, OFFICES,
RESTAURANTS etc.**

Manufacturers of High
Quality Container Homes

deon@containerhome.co.za

Head Office
(021) 201 1236
Deon 065 127 5026

6m and 12m Container Office



6m Container Office

Features

1 x 6m Shipping Container

Sliding door and 2 windows

Electrical installation with DB Board, Plug points and LED Light

Exterior light

Laminate flooring throughout

Shelving as per pic above

Manufacturers of High
Quality Container Homes

deon@containerhome.co.za

Head Office
(021) 201 1236
Deon 065 127 5026

Exterior and interior painted the colour of your choice

Fold Down Deck (optional electric winch) (4m x 2.5m)

Optional Bathroom with Toilet and Basin

Pricing:

Base Model without any extras:

R105 000 excl VAT and delivery

Extras:

Based on client requests

Delivery and installation:

Priced separately depending on installation site

Connection to utilities:

Price based in installation site

Foundations:

Price based on installation site and client requirements

Understand and obey the municipal by-laws!

In most instances, a single container will not require municipal planning or approval. However more than one, or more involved conversions will probably require municipal approval of your plans.

12m Container Office

1 x 12m Shipping Container

Sliding door and 2 windows

Electrical installation with DB Board, Plug points and LED Light

Exterior light

Laminate flooring throughout

2 x Shelving as per pic above

Optional Dividing Walls for private offices or waiting area

Exterior and interior painted the colour of your choice

Fold Down Deck (optional electric winch) (4m x 2.5m)

Optional Bathroom with Toilet and Basin



deon@containerhome.co.za

Head Office
(021) 201 1236
Deon 065 127 5026

Pricing:

Base Model without any extras:	R155 000 excl VAT and delivery
Extras:	Based on client requests
Delivery and installation:	Priced separately depending on installation site
Connection to utilities:	Price based in installation site
Foundations:	Price based on installation site and client requirements

Understand and obey the municipal by-laws!

In most instances, a single container will not require municipal planning or approval. However more than one, or more involved conversions will probably require municipal approval of your plans.

We now produce a FOLD DOWN Deck option on most of our Container Homes.

This gives added security and reduces our installation time on site. The deck can be attached to the home for transportation as well as potential exports. It is easy to fold up and down with either a manual or electric pulley system. It is lockable and easy to maintain.

We also manufacture Office Space for your home and workplace. These offices can be customized, added onto, combined, and then moved if required.

Manufacturers of High
Quality Container Homes

deon@containerhome.co.za

Head Office
(021) 201 1236
Deon 065 127 5026